



**OBERLIN
SHANSI**

**ANNUAL
REPORT**



 **2015-2016**

OBERLIN SHANSI



Abdillah Imron Nasution, Lecturer, Syiah Kuala University embraces Oberlin traditions by painting Tappan Square rock with fellow Shansi Visiting Scholars

Oberlin Shansi is an independent, nonprofit organization founded in 1908 and located on the campus of Oberlin College & Conservatory. We believe in the power of people to bring diverse worlds together through individual and group educational exchanges and community projects. In partnership with universities and nongovernmental organizations in China, India, Indonesia, and Japan, Shansi programs promote understanding and communication, and build bridges between people in Asia and the Oberlin community.

Dear Shansi Friends and Supporters,

Every year, I have the privilege of visiting with our Fellows and friends at Shansi sites in Asia. It is inspiring to see first-hand the impact Shansi can have, and great fun to spend time with the Fellows, Visiting Scholar alumni, and our many friends in these locations. In every case, I am moved by the deep mutual respect and commitment that grows from our longstanding relationships in Asia.

On a recent visit to Madurai, India, for example, I climbed a mountain (ok, a hill) with the Shansi Fellow to Lady Doak College Vanessa Champagne and Dr. Premila Paul of the Study Centre for Indian Literature in English and Translation at American College. I loved the view, and the *dosas* and *idlys* we dined on later, but it was the company that made the experience special. Premila has been a Madurai friend and advisor to Shansi Fellows for many years. She is an indefatigable guide through Shansi and Oberlin history in Madurai, the sites of Tamil Nadu, and the literature of India, and she has helped turn Madurai into home for generations of Shansi Fellows. Shansi is very fortunate to have friends like Premila as part of the Shansi family.

I am thrilled to present some of the Shansi stories of the past year in this Annual Report. These programs are made possible by the generosity of Shansi's supporters and partners, and we are grateful to everyone who helps us succeed. I hope you will enjoy reading this report, and that we can count on your continued support in the coming years.

Sincerely,



Gavin Tritt
Executive Director



Executive Director Gavin Tritt enjoys auto rickshaw ride to get dosas with Fellow Vanessa Champagne '13

SHANSI FELLOWSHIPS

Shansi Fellowships offer recent Oberlin graduates life-changing opportunities to live and work in China, India, Indonesia, and Japan for up to two years. They work with Shansi's university and nongovernmental organization partners, while at the same time studying language, learning local arts, volunteering, and finding other ways to engage in local communities. If you want to learn more about their experiences as Fellows, take a look at their annual narratives at www.shansi.org.

CHINA

At Beijing Normal University, Shansi Fellows spend one year teaching and undertaking intensive Chinese language studies. At the same time, a Chinese graduate student comes to Oberlin for up to two years to teach Chinese language. At Shanxi Agricultural University in the small city of Taigu in Shanxi province, Fellows teach undergraduate English majors and graduate students while sharing American culture and building on a relationship that extends back more than a century.

Beijing Normal University

JEREMY RUBINSTEIN '14 arrived at Beijing Normal University with an appetite for learning Chinese and a passion for teaching. By year's end, he found himself reading Chinese literature with ease, and felt confident helping his students prepare to teach Chinese as a Second Language around the world. He had more than 100 students in his language and culture classes, and found that "teaching and lesson planning totally independently...this is the first time I have had so much freedom, responsibility, and authority in my life. It feels really rewarding."

Shanxi Agricultural University

When NATHAN MICHAELSON '13 arrived in Taigu, he looked forward to learning Chinese and better understanding how China works, but it was in his second year that he started developing the necessary language skills and cultural awareness to operate within the unspoken rules of "giving face" and developing *guanxi* (relationships). He found himself embracing his many roles as English language teacher, cultural detective, and Chinese language student, observing that "I love learning languages, figuring out grammatical puzzles and developing a new way of thinking and seeing the world."

For THEO CARNEY '14, travel punctuated the ups and downs of two years in Taigu. He describes "the freedom of crossing vast distances by oneself, and the joy of being met by friends at the end of those journeys—there is nothing like that." He visited the Jaipur Literature Festival in India, holidayed in Sri Lanka, and made his way all over China. One wonderful discovery was a vineyard and winery near Taigu, with the local wines now a favorite of Shansi Fellows and visitors from the Shansi office.

WILLIAM "LIAM" LESLIE '15 found that "rural" means something quite different in Taigu, which sits in a county of more than 200,000 people. While doing geology field work in Sichuan, Liam found a more remote rural China, but even that area is undergoing rapid change. "During our journey, we encountered pothole-filled dirt roads on which we spent hours driving mere miles, turnaround points where the road didn't exist anymore, and, my favorite, road delays, not because of traffic, but because the road was being built in front of us."

MARGARET "MAISY" BYERLY '15 had very specific ideas about what she hoped to accomplish during her Shansi Fellowship, but something unexpected happened during her first year in Taigu – she started to build a softball team. One day, a discussion of American sports ended with an impromptu game of catch. It turned out Maisy's students were excited to learn about American culture in a new way. For Maisy it was a chance to share something she loves, and that connected her with her students and friends in ways that she had never imagined possible.



Jeremy Rubinstein teaching at Beijing Normal University

INDIA

Shansi Fellows experience the remarkable diversity of India working with nongovernmental organization Jagori Grameen in northern Himachal Pradesh, and with Lady Doak College in the southern city of Madurai in Tamil Nadu. At Jagori Grameen, Fellows work with rural Knowledge Centers and support programs that fight gender-based violence, promote access to justice for women, and advance sustainable agriculture. At Lady Doak College, the Shansi Fellow promotes international engagement by running the International Study Centre and supporting international service learning projects.

Lady Doak College

VANESSA CHAMPAGNE '13 was immersed in cross-cultural exchange during her first year. She worked closely with student volunteers who organized meetings, events, and performances on global issues at Lady Doak, and she supported community-based learning programs with students visiting from Japan, Korea, and Hong Kong. Somehow, she also found time to immerse herself in Tamil language and culture, and enjoyed celebrating festivals and holidays with students and colleagues. She vividly recalled the display of dolls during the Navathi celebrations, and the gifts of fruits, jasmine flowers, bangles, sandal powder and more provided by her hosts.



Vanessa Champagne with students at Lady Doak European Carnival chalk walk

Jagori Grameen

Language opened doors for CHRISTIAN JAMES '14. He impressed Jagori Grameen staff with his Hindi fluency, he learned the local dialect Gaddi, and he began to understand Pahāri, another local dialect. Languages led to learning local folk music, ranging from Gaddi devotional songs to Pahāri love songs, Hindi film songs, and many varieties of *bhajan* (participatory devotional songs). Christian found inspiration in the way this music

connects with sustainable values and ideas of harmony with nature, but he worries about the future as local languages and cultures become less relevant to the younger generation.



With a local instrument builder, Christian James experimented with building his own hybrid musical instrument

EMMANUEL GREENBERG '15 kept busy during his first year in Himachal Pradesh. After working on program monitoring and evaluation, and sustainable agriculture with Jagori Grameen during the week, he spent his weekends volunteering at Nishtha, a local clinic that provides affordable health care to the most disadvantaged local communities. This was a chance to see into places normally inaccessible to visitors, and Emmanuel tells us “I am beginning to see familiar faces and becoming more intimate with the patients... For only the brief moments that I spend with each patient, the time feels sacred.”



Emmanuel Greenberg pauses on his walk home through rice fields

INDONESIA

At Gadjah Mada University in Yogyakarta, Shansi Fellows teach graduate students in religious studies and undergraduate English majors while participating in the educational and cultural hub of Java. At Syiah Kuala University in Aceh, Shansi Fellows teach undergraduates, graduate students, and faculty, helping many prepare for advanced study abroad, while engaging in the active civil society of Banda Aceh.

Syiah Kuala University

During her second year, LEILA GOLDSTEIN '14 reported feeling more comfortable teaching and being more efficient with lesson planning. She had lesson plans to draw from and a better idea of what works best with her students. She designed and taught a Basic Poetry class, which felt like a classroom community for her, and she hopes to use this as a model. She was active outside the university as well. She taught at an international NGO focusing on children's education, and worked with local high school students learning improv and storytelling.



Leila Goldstein in class at Syiah Kuala University

In addition to his teaching duties at Syiah Kuala University, PATRICK GILFETHER '15 was very involved with the community in Banda Aceh. He formed a partnership with a local environmental NGO, HAKA (Hutan, Alam dan Lingkungan Aceh - Forest, Nature and Environment of Aceh), to produce, direct, shoot and edit a video documenting risks to a fragile ecosystem and the local community that depends on it.

Gadjah Mada University

RUBY SAHA '14 came to appreciate the diversity of Indonesian society. Living in Yogyakarta, she felt privileged to learn about Javanese culture, but she also enjoyed getting to know young people from the eastern islands who crowd into reggae night at a popular bar, telling us that "...as a Shansi fellow, within the context of cross-cultural discourse that we carry with us throughout our time here, I think we, I, should appreciate and

participate in the culture that surrounds us, but also seek out the limits and margins of these spaces..freedom that our students do not often have."



Teresa Tippens and Ruby Saha enjoy a beautiful afternoon at the Prambanan Temple in Yogyakarta

TERESA TIPPENS '15 sets goals for herself, and if her first year's activities in Yogyakarta are any evidence of her determination to reach her goals, it appears Teresa will have a very successful Fellowship. Reaching conversational fluency, traveling in Asia, and becoming a great teacher are big parts of her aspirations. She also hopes to share her love of baking, and some tasty desserts, with her friends and students.



Shansi Board Chair Professor Anuradha Needham leads a workshop on Feminist Research Methodologies with UGM graduate students

JAPAN

The first Shansi Fellows arrived at J.F. Oberlin University in 1953, soon after it launched under the name Obirin Gakuen. Since 1979, nearly 50 Shansi Fellows have worked in the English Language Program and supported a wide range of extracurricular activities, while also enjoying the opportunity to learn about Japan and study Japanese.

J.F. Oberlin University

Personal growth was a theme for ARIEL POWELL '14 during her Shansi Fellowship. Traveling in India was a game-changer. "I was taken so far out of my comfort zone that I was forced to redefine where that zone actually was. I really needed that to happen." As her second year came to an end, Ariel told us "Good or bad, I know this experience has completely changed my life's trajectory. Possibilities have opened up to me that I never before dreamed of happening. Through this experience I have become more flexible and changed how I view the world."



Ariel Powell at the Taj Mahal

CHUL KIM '15 was familiar with Japan when he arrived in Machida, but he soon realized there was much work to do on his project of fitting into Japanese society. One of his greatest leaps was to join a traditional *shakuhachi* and *koto* music group where his fellow musicians were all much older and more experienced. Chul persevered, and soon found himself, dressed in traditional *haori* (jacket) and *hakama* (trousers), performing a complicated *koto* piece at a recital a few months into his music lessons.

CHRISTOPHER NGUYEN '15 arrived in Japan eager to become a good teacher, and he has found teaching rewarding so far. He also wanted to be a learner. Having been an avid *taiko* player at Oberlin, Chris headed for the Oedo Sukeroku Taiko School, one of the oldest professional *taiko* groups in Japan. There he was introduced to the idea of perfecting one's form before moving on to another piece. This contrasts with the U.S., where *taiko* players work on many pieces simultaneously. Chris plans to extend his *taiko* experiences next year by joining an *Eisa* (Okinawan drumming) group.



Before Chul's first *koto* recital, (left to right) Cassandra Guevara, Christopher Nguyen, Chul Kim, Ariel Powell, and JET Fellow Ken Takagi



Chul Kim with student in JF Oberlin University Writing Support Center

OBERLIN CAMPUS PROGRAMS

VISITING SCHOLARS 2015 - 2016

The Visiting Scholar Program enables faculty and staff from Shansi partners in China, India, and Indonesia to experience Oberlin College and the local community for a semester or a full academic year. Each visitor develops a program that can include improving their scholarship and teaching approaches, learning about student life and support networks at Oberlin, presenting their research to students and faculty, volunteering with local community organizations, and participating in academic conferences and traveling within the United States.

PADMAJA SANKARARAJ

Assistant Professor, Department of Physics, and Coordinator, Center for Information Technology, Lady Doak College, Madurai, India

FARAH DIBA

Lecturer, Faculty of Public Health, Syiah Kuala University, Banda Aceh, Indonesia

ABDILLAH IMRON NASUTION

Lecturer, Faculty of Dentistry, Syiah Kuala University, Banda Aceh, Indonesia

RISWANDI

Lecturer, Faculty of Economics, Syiah Kuala University, Banda Aceh, Indonesia

ZHANG JIE

Visiting Instructor of Chinese at Oberlin College, and graduate student at Beijing Normal University, China



Riswandi enjoying the Spring thaw in front of Shansi House

Riswandi, Lecturer, Syiah Kuala University jumped right in when he arrived as a Visiting Scholar at Oberlin. He audited classes on econometrics and the economics of education, used Mudd Library resources in completing his PhD proposal, and studied Oberlin's Center for Learning, Education, and Research (CLEAR) as a model to bring back to Aceh. He and his colleague Farah Diba enjoyed participating in a reflective panel on "The Muslim Classmate" where students described their experiences of being Muslim in the U.S., and they helped organize a Shansi Open House that shared Acehnese food, language, and music with the Oberlin community. Both also became avid bowlers, and Riswandi hopes to open a bowling alley in Aceh someday!

IN-ASIA GRANTS 2015 - 2016

Shansi In-Asia Grants are aimed at first-, second-, and third-year Oberlin students with an entrepreneurial instinct and a great idea for a summer or Winter Term project in Asia. The students listed below were awarded In-Asia Grants for 2015-2016.



In-Asia grantee Marcus Hill (center), mentor Professor of Geology Amanda Schmidt (left), and others at Sichuan, China research site

BIKALPA BANIYA '19

Post-Disaster Education Assistance in Nepal

DENNIS DANYANG DONG '18

Chinese Path Toward Environmentalism: The Perspective of Chinese NGOs

OLIVIA EVANS '18

Tracing the Chinese Diaspora Through Oral History: Migration and Adjustment in Bogor, Indonesia

MARCUS HILL '19

Investigating Erosion Along the Jinsha River in Sichuan, China

KIRK PEARSON '17

Sea Change: A Documentary Exploration of Indonesia's Java Sea

PRIYANKA SEN '19

A Brave New World: Learning and Un-Learning Gender Norms in Kolkata, India

JUN TAKAKI '17

Research in a molecular biology lab at Kyoto University Graduate School of Medicine examining the genes and various proteins associated with Moyamoya disease

Linh Tran '18

When the Birds Fly Home (Exploring Post Study Abroad Lives of Vietnamese Abroaders)

CAMPUS PROGRAMS 2015 - 2016

Every year, Shansi hosts Asia-focused events and collaborates with academic departments and student organizations to support programs that enrich the cultural life of the campus. Here are some highlights from the past year.



Green Legacy Hiroshima co-founder Tomoko Watanabe (center) celebrates MOU signing with Oberlin College President Marvin Krislov (left) and Oberlin Shansi Executive Director Gavin Tritt (right)

“Sadako: In the Spirit of Peace,” September 8 – 11
Shansi collaborated with Professors Ann Sherif and Sylvia Watanabe, and Oberlin resident Diana Roose to bring Tomoko Watanabe from the NGO Green Legacy in Hiroshima, Japan to help distribute seeds from trees that survived the atomic bombing. Shansi, Oberlin College, and Green Legacy signed a memorandum of understanding to establish a peace garden in Oberlin with trees grown from the seeds and saplings she provided. Ms. Watanabe also opened an art exhibit at the Firelands Association for the Visual Arts (FAVA), held a public discussion at First Church, and met with high school and college students to discuss the story of Sadako and the rebirth of Hiroshima after World War II.

This is a Music: Reclaiming an Untouchable Drum, November 12 – 13

Professor Jennifer Fraser invited Professor Zoe Sherinian '84 from the University of Oklahoma, and Shansi Fellow to Madurai India '85-'87, to screen her documentary on *parai* drumming of Tamil Nadu, India and share her research and experiences in India as a Shansi Fellow.

South Indian Dance, February 22-26

Professor Ann Cooper Albright from the Dance Department brought classical Indian dancer Ananda Shankar Jayant for a performance and workshops on two traditional South Indian dances – *Bharatanatyam* and *Kuchipudi*.

Thenmozhi Soundararajan: Ending Caste Apartheid, March 10

Emma Leiken, a fourth-year Religion major, brought multi-media activist Thenmozhi Soundararajan to campus for an arts activism workshop and to share her experiences filming a documentary in India aimed at exposing the unfairness and unequal treatment of Dalits.

Taiko-Kenny Endo 40th Anniversary, April 3

In celebration of Kenny Endo's 40th year of drumming taiko, Oberlin College Taiko invited his contemporary ensemble to perform in Finney Chapel.

Health Activism of Self-Identified Gay Men in Post-Socialist China, April 4

Fourth-Year Sue Xu collaborated with Professor Marc Blecher to invite Professor Tiantian Zheng from SUNY Cortland to present her ethnographic research and meet with students to discuss the continuing stigma of homosexuality and repressed lifestyles faced by gay men in China.

Shansi Open House, April 21

Professor Jennifer Fraser and Visiting Scholars Farah Diba and Riswandi collaborated to organize a Shansi open house focused on Indonesia in celebration of Asian and Pacific Islander Diaspora (APID) Month.

SHANSI PRIZE

The Shansi Prize is awarded annually to a graduating senior from the College or Conservatory in recognition of exceptional work on a topic relating to Asia. The 2016 Shansi Prize was shared by two students. EMMA LEIKEN '16 was recognized for her Capstone project “The New Epoch-BUILDER: Buddhist Identities and the Reclamation of Personhood in the Ambedkar Conversion Movement,” nominated by Professor of Rhetoric and Composition LAURIE McMILLIN. RICHARD TRAN '16 shared the Shansi Prize for his Honors Studio Thesis Exhibition “I Will Not Be Buried,” nominated by Professor of Studio Art NANETTE YANNUZZI-MACIAS. His installation used photographs, sculptures, and objects to explore the pain of war experienced by his community during the Viet Nam War.

FINANCIAL STATEMENTS

STATEMENT OF ACTIVITIES *for the year ended June 30, 2016*

	2016			Total
	Unrestricted	Temporarily Restricted	Permanently Restricted	
Operating Revenues				
Investment earnings and gains	\$ 99,308	\$ 510,280	\$	\$ 609,588
Private gifts and grants	109,813			109,813
Net assets released from restrictions	554,623	(554,623)		
Total operating revenues	<u>763,744</u>	<u>(44,343)</u>		<u>719,401</u>
Operating Expenses				
Program				
China	98,580			98,580
Indonesia	130,761			130,761
India	88,041			88,041
Japan	72,251			72,251
Oberlin campus	195,778			195,778
Administrative and general	76,651			76,651
Fundraising	61,748			61,748
Total operating expenses	<u>723,810</u>			<u>723,810</u>
Change in net assets				
 from operating activities	<u>39,934</u>	<u>(44,343)</u>		<u>(4,409)</u>
Non-operating Activities				
Investment losses	(99,239)	(509,932)		(609,171)
Unrealized losses	(45,612)	(240,604)		(286,216)
Capital and deferred gifts			9,436	9,436
Change in net assets				
 from non-operating activities	<u>(144,851)</u>	<u>(750,536)</u>	<u>9,436</u>	<u>(885,951)</u>
Change in net assets	(104,917)	(794,879)	9,436	(890,360)
Net assets at beginning of year	<u>2,609,885</u>	<u>7,058,923</u>	<u>2,786,952</u>	<u>12,455,760</u>
Net assets at end of year	<u>\$ 2,504,968</u>	<u>\$ 6,264,044</u>	<u>\$ 2,796,388</u>	<u>\$ 11,565,400</u>

FINANCIAL STATEMENTS

STATEMENTS OF FINANCIAL POSITION *as of June 30, 2016 and 2015*

	<u>2016</u>	<u>2015</u>
<u>ASSETS</u>		
Current Assets		
Cash and cash equivalents	\$ 54,657	\$ 27,928
Accounts receivable	1,038	3,358
Deposits and prepaid expenses	136	136
Total current assets	<u>55,831</u>	<u>31,422</u>
Long-Term Investments	11,247,013	12,128,904
Property, Plant and Equipment		
Land	56,000	56,000
Buildings	225,427	225,427
Building improvements and renovations	305,617	305,617
Furniture and equipment	105,487	104,548
	<u>692,531</u>	<u>691,592</u>
Less: accumulated depreciation	(389,215)	(364,465)
Net property, plant and equipment	<u>303,316</u>	<u>327,127</u>
TOTAL ASSETS	<u>\$ 11,606,160</u>	<u>\$ 12,487,453</u>
<u>LIABILITIES and NET ASSETS</u>		
Current Liabilities		
Accounts payable and other liabilities	\$ 40,760	\$ 31,693
Total current liabilities	<u>40,760</u>	<u>31,693</u>
Net Assets		
Unrestricted -		
Current operations	418,017	353,334
Unexpended plant and facility funds	3,996	3,705
Invested in plant facilities	303,316	327,127
Board designated funds	1,779,639	1,925,719
Total unrestricted	<u>2,504,968</u>	<u>2,609,885</u>
Temporarily Restricted -		
Unexpended gift fund		44,343
Cumulative earnings - endowment funds	6,264,044	7,014,580
Total temporarily restricted	<u>6,264,044</u>	<u>7,058,923</u>
Permanently Restricted -		
Endowment funds	2,796,388	2,786,952
Total net assets	<u>11,565,400</u>	<u>12,455,760</u>
TOTAL LIABILITIES and NET ASSETS	<u>\$ 11,606,160</u>	<u>\$ 12,487,453</u>

OBERLIN SHANSI DONORS

PATRON (\$1,000 and over)

Elaine Bridges
Lynn Carlson
Michele Clark & Ziyad Hopkins
Ann & Norman Craig
Eric Estes
A. Murray Evans
Kim Z. Golden
Cynthia Grubb
Bruce R. Harker & Anne C. Palmer
Lenice Krull Hirschberger
Robert Jenkins
Randall Jones
Peggy & Scott Kalb
Scott King
Sarah Newman & Beth Rogers
Clyde Owan
Mr. & Mrs. Joseph Yuen Terry

SUPPORTER (\$250 - \$999)

Ms. Jean Anderson
Dr. Peter Berman & Ms. Jennifer Ruducha
Amanda Bickel & Peter Mayer
John Breckenridge
Horace Briggs & Mary Ann Briggs
Hana Brown & Daniel Wilder
Mr. & Mrs. Lawrence Buell
Beatrice Camp & David Summers
Carrie Carter & Colin Fishwick
Mary Child & David Youtz
Mr. & Mrs. Richard E. Dudley
Robert Dudley
David Eaton
Joycelyn Eby
Diane Engel
Jesse Gerstin & Brittany Jordan
Mr. & Mrs. Thomas Gold
Philip Hodge
Wayne Johns
Barbro & Norman Jung
Emmett Keeler
Jeanne Larsen
Gary Kornblith & Carol Lasser
Ellie & Marshall Linden
Susan MacKnight
Julie Min & Gavin Tritt
Patricia Mooney & Alan Steinberg
Anuradha & Larry Needham
Dr. Brandon Ong
Ms. Sharon Parker & Dr. Robert Swarm
Melody Peterson
Andrew Platt
Harry & Sharon Seelig
Audrey Slate
Ann Stevens
Toni Strassler
Martin Thomson
Barbara Boothby Wendt

David & Lynn Wilder
Mr. & Mrs. James Zinser

FRIEND (up to \$250)

Charles Adams
Dr. & Mrs. Jeffrey Allen
Joyce Allen
Marie Anderson-Miller & David Miller
Anonymous
Robert Ashcraft
Sheila Aszling
Kelsey Atkinson
Margaret Atkinson
Sally Baek
David Baldwin
Mrs. Bert Ballin
Andrew & Paula Baron
Nancy Bassett
Grace Bentley
David Benzing & Linda Grashoff
Ann F. Bloom
Steven Bloom & Elsie Kappler
Kay Bondehagen & Peter Gergen
Edward Bosworth
Phillip Braun
Midge & Smith Brittingham
Dwight Call
Margaret Camp
Scott Carney & Melanie Kozol
Demaris Carrell
Carol Chan
Alexander Chew
Reverend Arthur Christofersen
Joan Cleary & Jerome Helfand
Harriet & Henry Conroe
Margery Coombs
Roger & Fran Cooper
Todd Crosset & Anne Richmond
Lt. Col. George Crowl, Jr.
Emiko Custer
Mary Dart
Gregory Dasch
Dr. Edna L. Davis
Katharine T. Davis
Vivian H. Davis
Evan Dawley
Anya Desai
Helen & Raj Desai
Mary Dewar
Ann & Theodore Doege
Ruth & Warren Downs
Virginia Dunlap
Alice Eaddy
Jeff & Zart Eby
Eric Efron
Mr. & Mrs. David Elder
Mr. & Mrs. John D. Elder
Mark Elder & Kiki Speidel

Manfred Elfstrom
Gretchen Engel
Martin Eskenazi
Mrs. Winifred A. Falcon
Mr. Donald Farley, Jr.
Elizabeth Ferguson
J. Scott Ferguson
Stuart Ferguson & Carolyn Welsh
Florelyn Fine
Gay Fischer
Carol & Daniel Fishwick
Mary Fluke
Thomas Fonda
Betty Beer Franklin
Jennifer Fraser
Barbara & William Fuchsmann
Randy Gaynes & Christine Haxager
Dr. Marya Giesy
Shari Gleason-Mayrhofer & Rudolph C.
Mayrhofer
Katherine Goh
Samuel Good
Mr. & Mrs. Charles Gosselink
Thomas Grayson & Debra Pollak
Alice Greene
Charles Greene
Donald Griffin
Mrs. Judith Griswold
Constance & Michael Grube
Carolyn Halsted
Katherine Hamilton & Daniel Martinez de la
Vega
Richard Harper
J. Barton Harrison
Dr. Christine Hashimoto
Dr. Scott Hassler
Nicholas Hatt
Jenna Lindeke Heavenrich
Bill Heinrich
Mary Heltsley
Dr. & Mrs. Charles Herron
Donald Heydt
Muriel Hiatt
Ms. Kim Hostelley & Thomas Uthup, Ph.D.
Maxine Houck
Joshua Howard
Alice Howes
Jennie Hunt
Russell Hurd
Cheryl Ikemiya
Frank Isaacs
David Jamieson & Betty Lou
Dr. Barbara Johnson
Dorothy Joslin
Dr. Patricia Kapur
Dr. William Katzin & Ms. Katie Solender
Louise & Robert Kidder
Helen Kim

2015-2016

Paul Kimoto
Ben King
Yvette Kirby
Dieter Knecht
Barbara Kreml
Kenneth Kwo
George Langelier
Gloria Lee
Dr. Richard Lei
Keith Leung
Joshua Levy & Jan Miyake
Ping & Tim Liang
James Lindholm
Jo Ann Loi
Mr. & Mrs. Robert Longworth
Mary Lou Loud
Qiusha Ma
Maria Marcus
Mr. & Mrs. Divakar Masilamani
Virginia Mayer
Nancy McEwen
Carol McLaughlin
Ann Millar
Ariana Moir
Joel Montague
Stephanie Mora Hernandez
Ms. Thelma J. Morris
Mark Moverman
Martha Munger
Takuya Murata & Tamara Usenova-Murata
Pamela Najdowski
Anne Nash
Dr. Joan M. Nelson
Ann Newman
Jane & Michael Newman
Mr. Don Noel, Jr.
Linda Norton
Linda Okahara & Balaram Puligandla
Doris Olney
Eleanor Omoto
Carol Ordal
Marcia F. Ott
Anita Parins
Nancy Petrie
Lt. Col. Preston Plews
Julie & Mark Pohlman
Mrs. Mary Pound
Cynthia Finch Powers
Elizabeth Ann Pratt
Franklin & Polly Presler
Erika Raberg
Morgan Ramsey-Elliott
Jane Rankin
Mrs. Sydney Reed
Margaret Reid
John & Sharyn Reitz
Derwent Riding
Evan Roth-Howe

George Rothschild
Harvey & Milena Rubinstein
Karen Saad
Linda Salter
Joanne Salus
Joseph Salus II
Sylvia Sanders
Lily Schatz
Ann Schraff
Mr. & Mrs. Francis Schott
Dorothy H. Schulz
George E. Shambaugh III
Sarah Sharpe
Samuel Sherer
Ann Sherif
Barbara Smith
Dr. & Mrs. Wade Smith
Dr. Jill Snyder
Marian J. Solleder
Dr. Warren Solomon
Harold Sondrol
Elena & William Speidel
Douglas & Nancy Spelman
Dr. Maurice Sterns
Anna Stormer
Richard Strom
Nien Lung Tai
Daniel Tam-Claiborne
Dr. John Tanner, Jr.
Shirley Tenney
Eleanor & William Teter
Marian Thomas
Dr. Norman Thoms
Martha Tobey
Harriette Treloar
Michael Trisolini
Linda Tugurian
Elizabeth Van Horn
Priscilla Vaughan
Vasanthi & Vittathur R. Venkitaraman
Janet Walker
Mr. Charles A. Watson
James Watt
Susan Weinstein
Elisa Wells
Carol Westerman
Richard Westerman
Elizabeth Lee Williams
Sarah Willis
Kate Wright
Lawrence Yee

CARLSON FUND

Lynn Carlson
G & G Educational Foundation
Jo Ann Loi

FELLOWS FUND

Dr. Peter Berman & Ms. Jennifer Ruducha
Mr. & Mrs. Lawrence Buell
George Crowl
Gregory Dasch
Dr. Edna L. Davis
Maxine Houck
Kenneth Kwo
Anne Nash
Linda Okahara & Balaram Puligandla
Dr. Brandon Ong
Andrew Platt
Nien Lung Tai
Elisa Wells
Lawrence Yee

JACOBSON-COCCO FUND

Lynn Carlson
Carrie Carter & Colin Fishwick
Martin Eskenazi
Lenice Krull Hirschberger
Clyde Owan

LEONARD FUND

Dr. Barbara Johnson
Randall Jones
Barbro & Norman Jung
Dieter Knecht
Mr. & Mrs. Divakar Masilamani

FOUNDATIONS

Community Foundation of New Jersey
Falcon Fund
Fidelity Charitable Gift Fund
G & G Educational Foundation
The Jo Wang & Kiau Loi Family Fund
Rochester Area Community Foundation,
William and Mildred Feinbloom Fund
The Pfizer Foundation

GIFTS IN HONOR

Randy Gaynes & Christine Haxager, *In Honor of daughter, Julie Gaynes, Indonesia Fellow 2013-15*
Lt. Col. Preston Plews, *In Honor of Ellsworth Carlson*
John Porter Jr., *In Honor of David Lockwood*
Dr. & Mrs. Wade Smith, *In Honor of Deborah Smith, Lady Doak College Fellow 1989-91*

GIFTS IN MEMORY

David Baldwin, *In Memory of Langford Baldwin*
Harry & Sharon Seelig, *In Memory of William E. Ratliff, Shansi Rep 1959-61*
Mr. & Mrs. Joseph Yuen Terry, *In Memory of Francis Davis and all whose names are on the Memorial Arch*

PEOPLE OF SHANSI

BOARD OF TRUSTEES

ZIYAD HOPKINS '92, *Chair*
PHILLIP BRAUN '81, *Treasurer*
JENNIFER FRASER, *Secretary*
PETER BERMAN '73
MARJORIE WOOD BRITTINGHAM '60
ANYA DESAI '07
JOYCELYN EBY '09
ERIC ESTES
KIM Z. GOLDEN '77/'79
SCOTT KALB '78
QIUSHA MA
HENRY McCANN '95
ANURADHA NEEDHAM
SARAH J. NEWMAN '07
ANN SHERIF
MICAHA TRUMAN '94
KATHRYN WRIGHT '01

HONORARY TRUSTEES

NELSON DE JESUS
JAMES ZINSER

TRUSTEE EX OFFICIO

MARVIN KRISLOV

STAFF

GAVIN TRITT, *Executive Director*
ELAINE VUKOV, *Assistant Director*
EVELYN WILKINS, *Secretary*
SHUYI LIN, *Campus And Outreach Coordinator*
STEPHANIE MORA HERNANDEZ '13, *Returned Fellow*



THE 2016 FELLOWS

HENRY ABERLE '16, East Asian Studies and Musical Studies,
J.F. Oberlin University, Machida, Japan

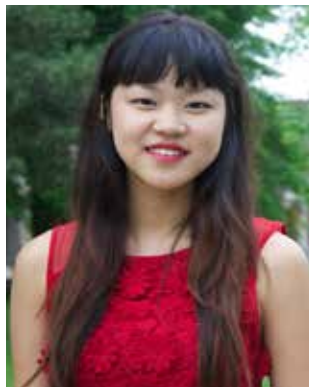
ANNELISE GISEBURT '16, East Asian Studies and English,
*UNITAR, ANT-Hiroshima, and Green Legacy Hiroshima,
Hiroshima, Japan*

LOUISE EDWARDS '16, Neuroscience and Creative Writing,
Shanxi Agricultural University, Taigu, China

Eli Fisher '16, Religion, *Gadjah Mada University,
Yogyakarta, Indonesia*

JEREMY RUBINSTEIN '14, East Asian Studies, *Beijing Normal
University, Beijing, China*

JULIA SKROVAN '15, Geology, *Syiah Kuala University, Banda
Aceh, Indonesia*



LYDIA SMITH '17,

Shansi Website Manager & Report Designer
Cinema Studies
Gender, Sexuality, & Feminist Studies

STORIES OF TAIGU

PICTORIAL EXPLORATIONS OF LIFE AS A SHANSI FELLOW

MARGARET “MAISY” BYERLY '15 produced a wonderful series of graphic narratives of her adventures during her Shansi Fellowship at Shanxi Agricultural University. “Episode 9: The Vegetable Market” is a beautiful portrait of the vegetable sellers operating near campus. Maisy delightfully captures the feeling of the market, from the many varieties of cabbage to the child seat clamped on to a grandfather’s bicycle.





OBERLIN SHANSI
Oberlin College
50 North Professor Street
Oberlin, OH 44074

NONPROFIT.ORG
U.S. POSTAGE
PAID
OBERLIN COLLEGE

